

**NEW**

# novadG<sup>®</sup>

## SPRAY EQUIPMENT

### **G-CONNECT**

Hydraulic Proportioning Unit

*Maximum connectivity to control and analyse your Foam and Polyurea applications!*

Intuitive smart touch screen

Control from your mobile device

Hydraulic power to assure constant pressures and ratio control

2x 6000 W heating power

240 bar maximum pressure



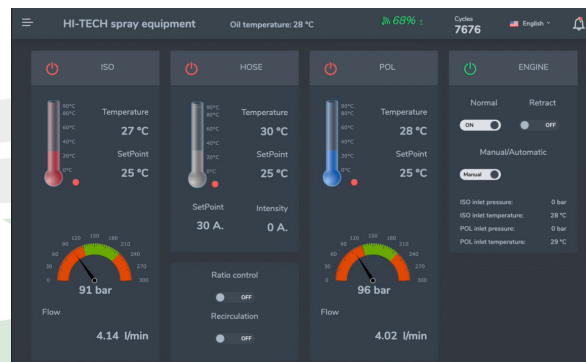
# G-CONNECT

## FEATURES

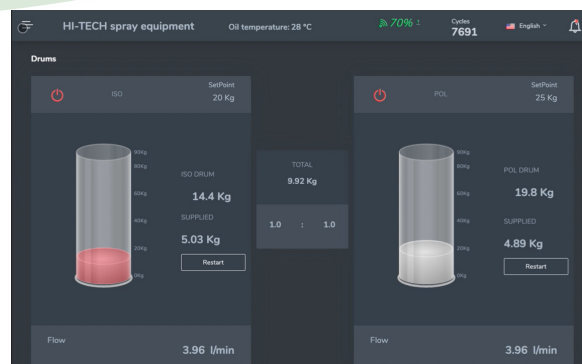
- ✓ Access all application data and generate your own reports from any device
- ✓ GPS location
- ✓ Smart touch screen easy to use
- ✓ Remote control with your mobile device
- ✓ Full control options:
  - Accurate ratio and output control with flowmeters
  - In & out temperatures and pressures control
  - Oil temperature
  - Alarms and troubleshooting guide

## SCREEN MENUS

### AUTOMATIC MODE



### DRUMS



## TECHNICAL SPECIFICATIONS

### G-CONNECT

<b>MAX. OUTPUT (1.20 PUMPS):</b>	15 kg/min @ 110 bar 9 kg/min @ 160 bar 7 kg/min @ 240 bar
<b>ELECTRICAL CONNECTION:</b>	3 PE 400 V 50/60 Hz 3 PE 230 V 60 Hz
<b>HEATING POWER:</b>	12 kW
<b>HOSE HEATING:</b>	4 kW
<b>MOTOR POWER:</b>	4 kW
<b>MACHINE CONSUMPTION:</b>	38,4 A / 66,8 A
<b>MAX. HOSES LENGTH:</b>	93 m
<b>WEIGHT:</b>	242 kg (without oil)
<b>OIL CAPACITY:</b>	28 l
<b>DIMENSIONS:</b>	1295 mm x 745 mm x 650 mm

### G-CONNECT +

<b>MAX. OUTPUT (1.20 PUMPS):</b>	22 kg/min @ 110 bar 17 kg/min @ 160 bar 12 kg/min @ 240 bar
<b>ELECTRICAL CONNECTION:</b>	3 PE 400 V 50/60 Hz 3 PE 230 V 50 Hz
<b>HEATING POWER:</b>	16 kW
<b>HOSE HEATING:</b>	4 kW
<b>MOTOR POWER:</b>	5,5 kW
<b>MACHINE CONSUMPTION:</b>	51,1 A / 89 A
<b>MAX. HOSES LENGTH:</b>	93 m
<b>WEIGHT:</b>	260 kg (without oil)
<b>OIL CAPACITY:</b>	28 l
<b>DIMENSIONS:</b>	1295 mm x 745 mm x 650 mm



### HI-TECH SPRAY EQUIPMENT, S.A.

Camí Pla, 31 - Pol. Ind. Mas Alba  
08870 Sitges - Barcelona (Spain)  
Tel. +34 938 11 40 00  
infonovag@hitechspray.com  
[www.novag.eu](http://www.novag.eu)

Follow us!

